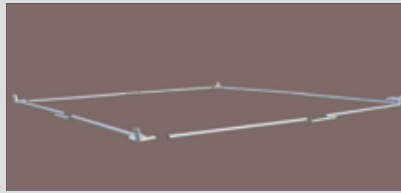


Step 1



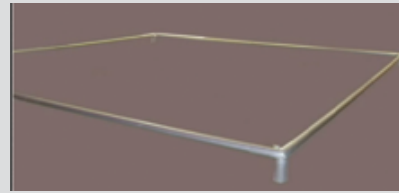
Ensure you have all the parts required

Step 2



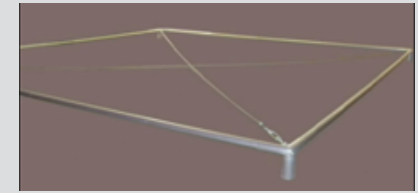
Lay out the roof bars and corner connectors

Step 3



Connect roof bars and corner connectors

Step 4



Attach cables in each corner and cross them diagonally across the middle of the frame

Step 5



Lay the PVC roof over the frame

Step 6



Attach the PVC roof to the frame

Step 7



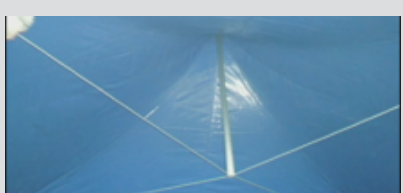
Insert two legs in to their corner connectors, leaving the other half on the ground

Step 8



Push the centre pole into place using the cables as a support for the centre pole

Step 8 cont..

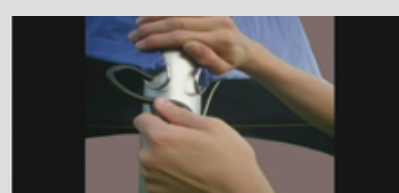


Step 9



Insert the remaining two legs and erect the marquee

Step 10



Hook the ratchet at the top of the leg and the bottom of the leg. Then tighten rope

Step 11



Attach sandbags to the legs



Step 1



Starting from the middle of the frame feed the right hand side of the wall towards the right leg. Keep feeding all the tabs and drag the wall across.

Step 2



Starting from the middle of the frame feed the left hand side of the wall towards the left leg. Keep feeding all the tabs and drag the wall across.

Step 3



Pick the bottom of the wall and feed the tabs into the leg starting from the top. Keep feeding all the tabs while pulling the wall downwards. Repeat this action for each wall.

Step 4



Walls can now be zipped and Velcro in the middle section